



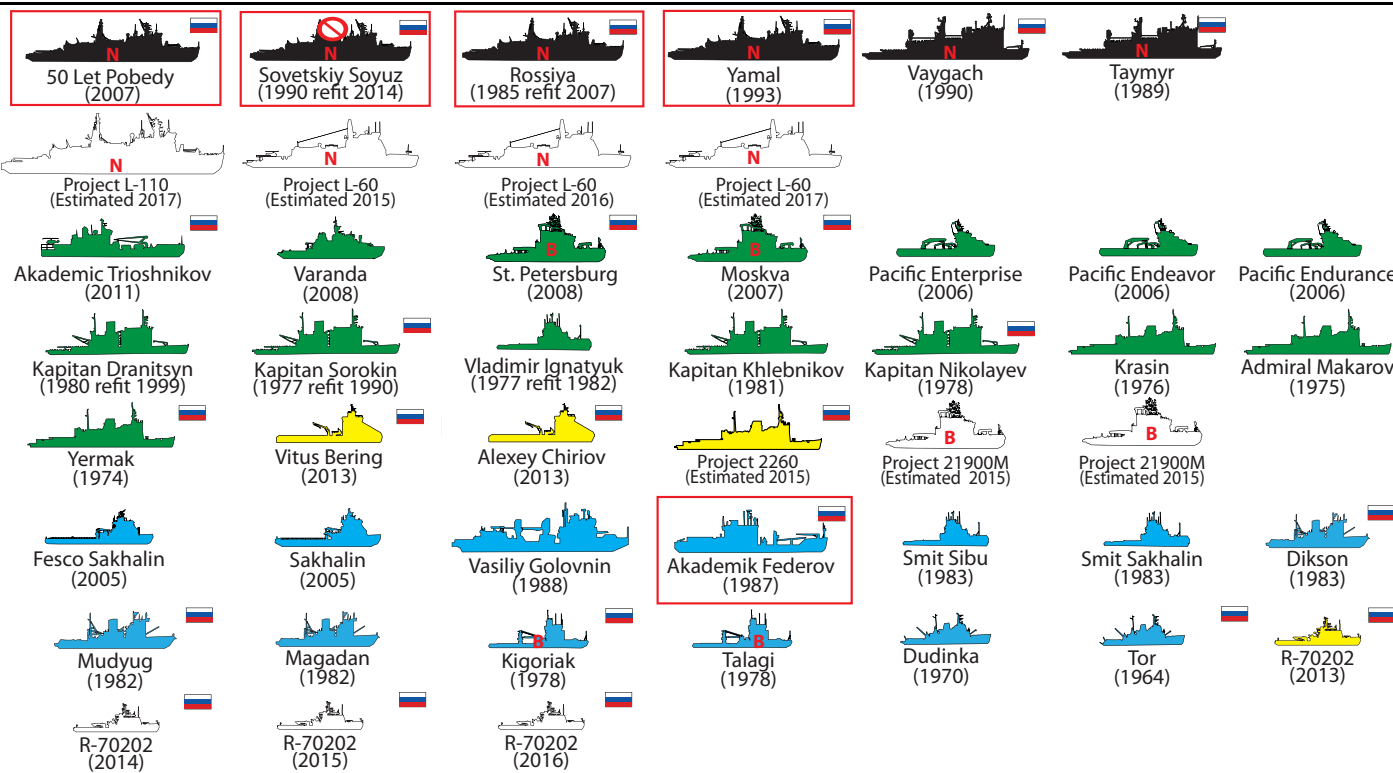
# MAJOR ICEBREAKERS OF THE WORLD



## RUSSIA

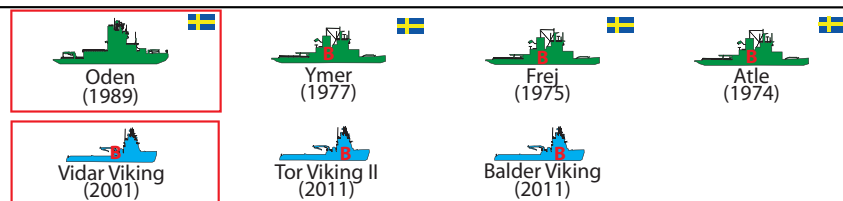
(34)

+ 4 under construction  
+ 9 planned



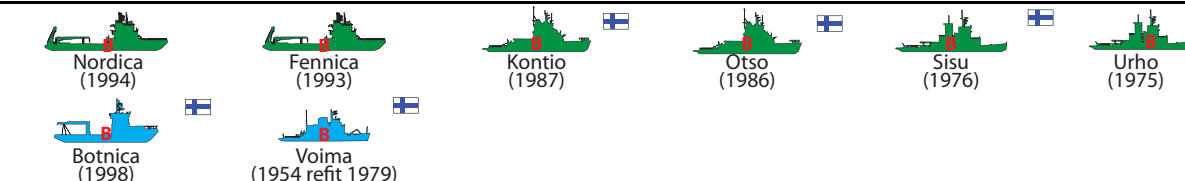
## SWEDEN

(7)



## FINLAND

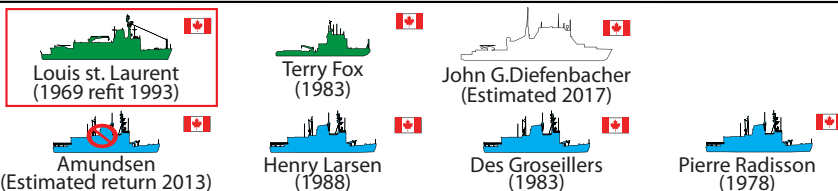
(8)



## CANADA

(6)

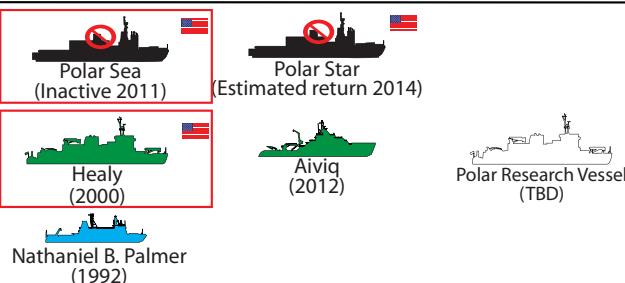
+ 1 planned



## USA

(5)

+ 1 planned



## DENMARK

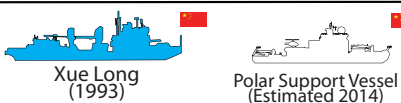
(4)



## CHINA

(1)

+ 1 planned



## ARGENTINA

(1)



## AUSTRALIA

(1)



## CHILE

(1)



## ESTONIA

(1)



## GERMANY

(1)

+ 1 planned



## JAPAN

(1)



## SOUTH KOREA

(1)



## SOUTH AFRICA

(1)



## LATVIA

(1)



## NORWAY

(1)

+ 1 planned



## KEY

Vessels were selected and organized based on their installed power measured in Brake Horse Power (BHP). Vessels with less than 10,000 BHP were not considered to be capable of independent arctic operation. Vessels are ordered by age, youngest first, within power groupings. Vessel outlines reflect relative sizes.

### COLOR GUIDE

Name (year constructed or refit) **Power Plant** ≥ 45,000 BHP

Name (year constructed or refit) **Power Plant** ≥ 20,000 BHP < 45,000 BHP

Name (year constructed or refit) **Power Plant** ≥ 10,000 BHP < 20,000 BHP

Name (anticipated completion) Under Construction

Name (anticipated completion) Planned

### NOTES

- Government owned or operated
- Unavailable
- Nuclear Power
- Designed for Baltic use
- Been to the North Pole

Data derived from various sources  
Updated:

September 10, 2012

An electronic copy of the most current chart is located at:

<http://www.uscg.mil/hq/cg5/cg552/ice.asp>

Direct Questions and Comments to:  
Doug Jackson - 202 372-2643  
e-mail: [Douglas.N.Jackson@uscg.mil](mailto:Douglas.N.Jackson@uscg.mil)  
OR  
LCDR Mike Krause- 202 372-1540  
e-mail [Michael.S.Krause@uscg.mil](mailto:Michael.S.Krause@uscg.mil)

Developed and maintained by USCG Office of Waterways and Ocean Policy (CG-WWM)